

horizon

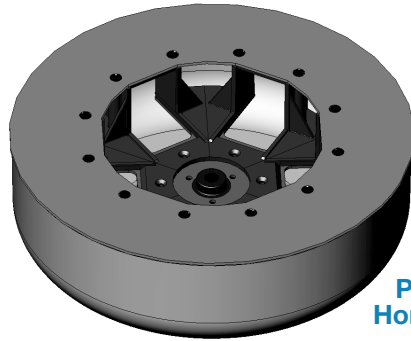
PERFORMANCE SERIES

PREMIER

Model 755VES



FAST
Plasma Preparations
 Platelet-Rich Plasma to
 Platelet Poor / Free Plasma!



Performance Horizontal Rotor
 (standard)

- **Large Capacity: Twenty-Four (24) 10mL Test Tubes; Twelve (12) 15mL Test Tubes; Six (6) 50mL tubes**
- **Full Horizontal Separation**
- **Precise Digital Controls**
- **ETL Compliant to ANSI/UL Standards; CE Marked**

Why Horizontal Separation?
 A horizontal rotor produces better separation with a tighter gel line, eliminating remixing and re-spins.

Horizontal Gel Line

10mL test tubes up to 17mm x 100mm
 15mL test tubes up to 17mm x 125mm
 UL Std. 61010A-1 and UL Std. 61010A-2-20, CAN/CSA C22.2 No. 1010.1 and CAN/CSA C22.2 No. 1010.2.20, CE EN 61000-3-2, -3-3, EN 61000-4-2, -4-3, -4-4, -4-5, -4-6, -4-11, EN 61010-1, -2-020

SPECIFICATIONS:

General Specifications: Horizon Premier, Model 755VES Centrifuge

Overall	Height:	9.0 in. (23 cm)
Dimensions:	Width:	14.5 in. (37 cm)
	Depth:	17.0 in. (43 cm)
Min. Acceleration Time:		15 seconds
Min. Deceleration Time:		15 seconds
Weight:		39 lbs. (17.7 kg)
Centrifuge Motor:		1/2 H.P. Brushless DC
Protection Breaker:		4 Amp. Re-settable
Timer:		Electronic, w/hold or 0 to 99 minutes +/- 1%
Max. Power Requirements:		200 Watts
Voltage:		115/230
		(+/- 10%) Volts
Frequency:		50/60 Hz

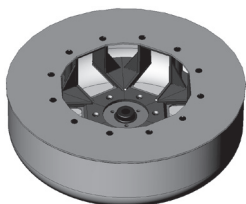
The Horizon Model 755VES, Premier, features the largest holding capacity of Drucker's Performance Series centrifuges. Its standard horizontal rotor and carriers can accommodate up to 24 test tubes. The 755VES offers control over almost every aspect of the unit's operation from variable acceleration and deceleration to easy time and speed input. High speed and force capability produces platelet-poor/free plasma and greatly reduces processing times. The exclusive Drucker horizontal rotor allows for quick and easy sample loading and complete horizontal separation. Save settings in one of 10 memory locations and recall them at the touch of a button.

OPERATING FEATURES

- **ELECTRONIC TIMER w/DISPLAY:** Selectable from 1 to 99 minutes, hold feature, (+/-1%)
- **ELECTRONIC SPEED CONTROL w/DISPLAY:** Easily set the running speed by RPM or RCf
- **BRUSHLESS DC MOTOR:** For smooth and quiet operation with no routine maintenance
- **VARIABLE ACCELERATION AND DECELERATION:** Customize the run from start to finish
- **END-OF-RUN AUDIBLE INDICATOR:** Sounds when the rotor has stopped to inform the operator that a cycle is completed
- **VARIABLE SPEED:** Precision variable speed control gives the operator the ability to select from 500 RPM to the maximum rotor speed (see table) in 50 RPM increments
- **QUIET OPERATION WITH LOW VIBRATION:** Double-encased motor and Drucker's unique "stability mount" assure quiet performance and low out-of-balance vibration

SAFETY FEATURES

- **AUTOMATIC LID LOCK:** Centrifuge will not run with the lid open; lid cannot be opened while samples are spinning
- **POSITIVE LID LATCHING:** Firm mechanical latching of the lid prevents the escape of debris in case of breakage or an accident
- **OUT-OF-BALANCE DETECTION:** If an imbalance is detected, the centrifuge will come to a safe controlled stop
- **WELDED STEEL CONSTRUCTION:** For strength and durability
- **CLEAR LID:** Offers safe observation and access for phototachometer



	PART NO.	# PLACES	MAX TUBE SIZE	SPEED RANGE ±10%	FORCE RANGE
6-Carrier Horizontal (Standard)	7786015				
4-Place Carrier	7713023	24	17mm x 100mm	500 to 3,500 RPM	40 to 2,200 xg
4-Place Carrier	7713023	12	17mm x 125mm	500 to 3,500 RPM	40 to 2,200 xg
50mL Horizontal Carrier (optional)	7713037	6	34mm x 115mm	500 to 3,500 RPM	40 to 2,200 xg
6-Place 50mL Fixed-Angle	7786044				
50mL Fixed-angle Carrier	7787051	6	34mm x 125mm	0 to 3,200 RPM	0 to 1,280 xg



50mL tube holder fixed-angle p/n 7787051



1.5 to 2mL tube Adapter p/n 7713065



13 x 75mm insert, p/n 7713064

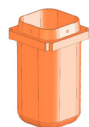


13 x 100 mm insert, p/n 7713066

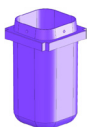


.5 to 1 ml tube Adapter p/n 7713068

Standard Accessories



100mL 4-pl. carrier p/n 7713023



50mL carrier p/n 7713037



Carrier cap p/n 7713035



.25" Cushion Spacer p/n 9150